



INSTRUCTIONS FOR:

- CamCube HF

HANDLING INSTRUCTIONS

- When the housing is moved or transported, the service door must be closed
- Wipe the housing with water or a mild detergent when needed

INSTALLATION INSTRUCTIONS

- Be aware of the airflow direction when installing the housing
- Adjustable feet are delivered with the housing, mounted on site
- Minimum 1 meter free space in front of the service door is needed for filter change

NOTE: Designed for indoor use

INSTALLATION OF NEW FILTER

- Open the service door. Inspect the gasket, if damaged replace the service door
- Carefully place the filter in the rail and clamp it with the levers. When installing bag filters, make sure the pockets are in upright position and have not been pinched before clamping

- For pre-filter installation (optional for HF-L) carefully push the pre-filter into the pre-filter rail
- Close the service door and secure the handles
- Close the hinges to seal the housing

BEFORE FILTER CHANGE

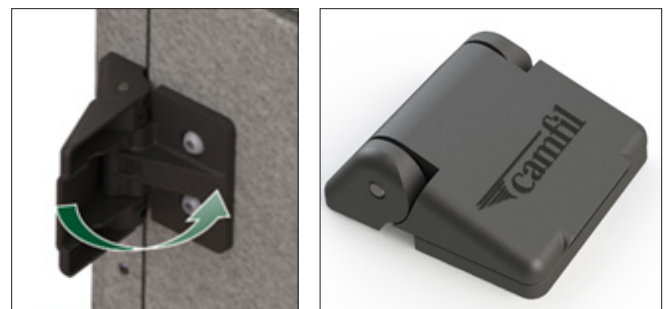
- Camfil recommends protective equipment like overalls, gloves and face masks when changing filters
- Always check local regulations before changing filters

FILTER CHANGE

- Shut down the ventilation system
- Open the service door. Inspect the gasket, if damaged replace the service door
- For pre-filter installation (optional for HF-L) remove the pre-filter from the pre-filter rail
- Untighten the filter clamping with the levers and remove the filter
- See instructions for Installation of new filter



Filter clamping device with safety mechanism; service hatch will not close if the levers are not secured



Pressure-relieving hinges; designed to avoid shearing damage to the service hatch gasket